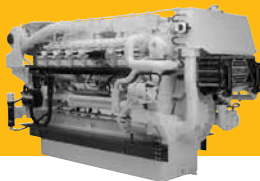


Electronic
Control
System



3516B

PROPULSION ENGINE

RATINGS AND FUEL CONSUMPTION

	mhp	bhp	bkW	rpm	U.S. g/h	g/bkW-hr	EPA - IMO - EU
A	1673	1650	1230	1200	77.1	198.9	NC - I - NC
A ¹	1901	1875	1398	1200	87.9	199.8	NC - I - NC
A	2028	2000	1491	1600	95.0	200.1	NC - I - NC
A	2028	2000	1491	1800	94.0	200.1	NC - I - NC
A ²	2028	2000	1491	1800	103.9	202.2	NC - I - NC
A ¹	2292	2260	1685	1600	102.6	193.2	NC - I - NC
A ¹	2481	2447	1825	1600	112.8	195.5	NC - I - NC
B	1775	1750	1305	1200	81.7	198.8	NC - I - NC
B	2129	2100	1566	1600	99.5	201.7	NC - I - NC
B	2129	2100	1566	1800	98.6	200.0	NC - I - NC
B ¹	2408	2375	1771	1600	106.9	191.6	NC - I - NC
B ¹	2611	2575	1920	1600	112.8	195.2	NC - I - NC
C	1876	1850	1379	1200	86.6	207.0	NC - I - NC
C	2231	2200	1640	1600	104.4	202.1	NC - I - NC
C	2231	2200	1640	1800	103.4	200.4	NC - I - NC
C ¹	2535	2500	1864	1600	111.9	190.5	NC - I - NC
C ¹	2718	2682	2000	1600	122.8	194.9	NC - I - NC
Ahp	2718	2682	2000	1925	128.9	204.7	NC - I - NC
Bhp	2434	2400	1790	1785	110.4	196.4	NC - I - NC
Chp	2636	2600	1939	1835	120.2	196.8	NC - I - NC
Dhp	2839	2800	2088	1880	132.7	201.8	NC - I - NC
Ehp	3042	3000	2237	1925	143.3	203.4	NC - I - NC

¹High displacement engine (HD)

²Wide operating speed range

	LE	H	WE
min.	131.9 in/3349 mm	69.0 in/1753 mm	67.0 in/1703 mm
max.	146.7 in/3725 mm	82.3 in/2091 mm	80.8 in/2053 mm
HD	141.1 in/3584 mm	81.9 in/2082 mm	84.4 in/2144 mm

Vee 16, 4-Stroke-Cycle Diesel

Aspiration	TTA	
Bore x Stroke	6.7 x 7.5 in	170 x 190 mm
Bore x Stroke ²	6.7 x 8.5 in	170 x 215 mm
Displacement	4210 cu in	69 liter
Displacement ²	4766 cu in	78 liter
Rotation (from flywheel end)	Counterclockwise or clockwise	
Engine dry weight (approx)	17,185-17,699 lb	7795-8028 kg