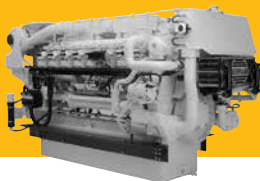


Electronic
Control
System



3516C

PROPULSION ENGINE

RATINGS AND FUEL CONSUMPTION

	mhp	bhp	bkW	rpm	U.S. g/h	g/bkW-hr	EPA - IMO - EU
A	1673	1650	1230	1200	78.9	206.2	NC - II - IW
A	2028	2000	1492	1600	96.3	202.8	NC - II - IW
A ¹	2292	2260	1686	1600	107.5	202.4	NC - II - IW
A ¹	2482	2448	1825	1600	113.2	206.9	NC - II - IW
B	1775	1750	1305	1200	84.2	206.2	NC - II - IW
B	2130	2100	1566	1600	100.4	201.8	NC - II - IW
B ¹	2407	2375	1771	1600	112	200.8	NC - II - IW
B ¹	2611	2575	1920	1600	118.6	206.7	NC - II - IW
B ¹	3046	3004	2240	1800	148.3	210.3	NC - II - IW
C	1876	1850	1379	1200	90.0	207.0	NC - II - IW
C	2231	2200	1641	1600	104.5	201.9	NC - II - IW
C ¹	2534	2500	1864	1600	117.0	199.3	NC - II - NC
C ¹	2720	2682	2000	1600	123.4	198.5	NC - II - IW
C ¹	3196	3151	2350	1800	148.6	209.2	NC - I - NC
C ¹	3196	3151	2350	1800	154.7	200.9	NC - II - IW
D ¹	2855	2816	2100	1600	114.9	199.0	NC - II - IW
D ¹	3434	3386	2525	1800	159.8	201.0	NC - I - NC
D ¹	3434	3386	2525	1800	165.0	207.6	NC - II - IW

¹High Displacement engine (HD)

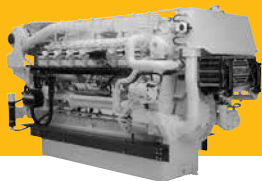
	LE	H	WE
min.	143.1 in/3637 mm	77.4 in/1967 mm	80.2 in/2037 mm
max.	148.0 in/3761 mm	84.6 in/2150 mm	84.3 in/2142 mm

Vee 16, 4-Stroke-Cycle Diesel

Aspiration	TTA	
Bore x Stroke	6.69 x 7.48 in	170 x 190 mm
Bore x Stroke ¹	6.69 x 8.46 in	170 x 215 mm
Displacement	4211 cu in	69 liter
Displacement ¹	4765 cu in	78 liter
Rotation (from flywheel end)	Counterclockwise or Clockwise	
Engine dry weight (approx)	17,550-19,025 lb	7961-8629 kg

3516C

PROPULSION ENGINE



Electronic
Control
System

RATINGS AND FUEL CONSUMPTION

EPA Tier 3 Ratings

	mhp	bhp	bkW	rpm	U.S. g/h	g/bkW-hr	EPA	- IMO-	EU
A	2161	2131	1590	1600	103.6	207.0	T3C	- II	- NC
A	2480	2446	1825	1600	118.9	206.9	T3C	- II	- NC
B	2270	2239	1670	1600	108.9	207.0	T3C	- II	- NC
B	2610	2574	1920	1600	125.0	206.7	T3C	- II	- NC
B	3045	3003	2240	1800	147.6	209.2	T3C	- II	- NC
C	2379	2346	1750	1600	114.1	207.0	T3C	- II	- NC
C	2712	2675	1995	1600	129.8	206.6	T3C	- II	- NC
C	3194	3150	2350	1800	115.4	209.9	T3C	- II	- NC
D	3432	3385	2525	1800	167.4	210.9	T3C	- II	- NC

Preliminary EPA Tier 4 Ratings

	mhp	bhp	bkW	rpm	U.S. g/h	g/bkW-hr	EPA	- IMO-	EU
B	3045	3003	2240	1800			T4C		
C	3194	3150	2350	1800			T4C		

LE**H****WE**

min.	125.7 in/3192 mm	87.6 in/2225 mm	89.9 in/2284 mm
max.	125.7 in/3192 mm	87.6 in/2225 mm	89.9 in/2284 mm

Vee 16, 4-Stroke-Cycle Diesel

Aspiration	TTA	
Bore x Stroke	6.69 x 8.46 in	170 x 215 mm
Displacement	4765 cu in	78 liter
Rotation (from flywheel end)	Counterclockwise or Clockwise	
Engine dry weight (approx)	21,164 lb	9600 kg